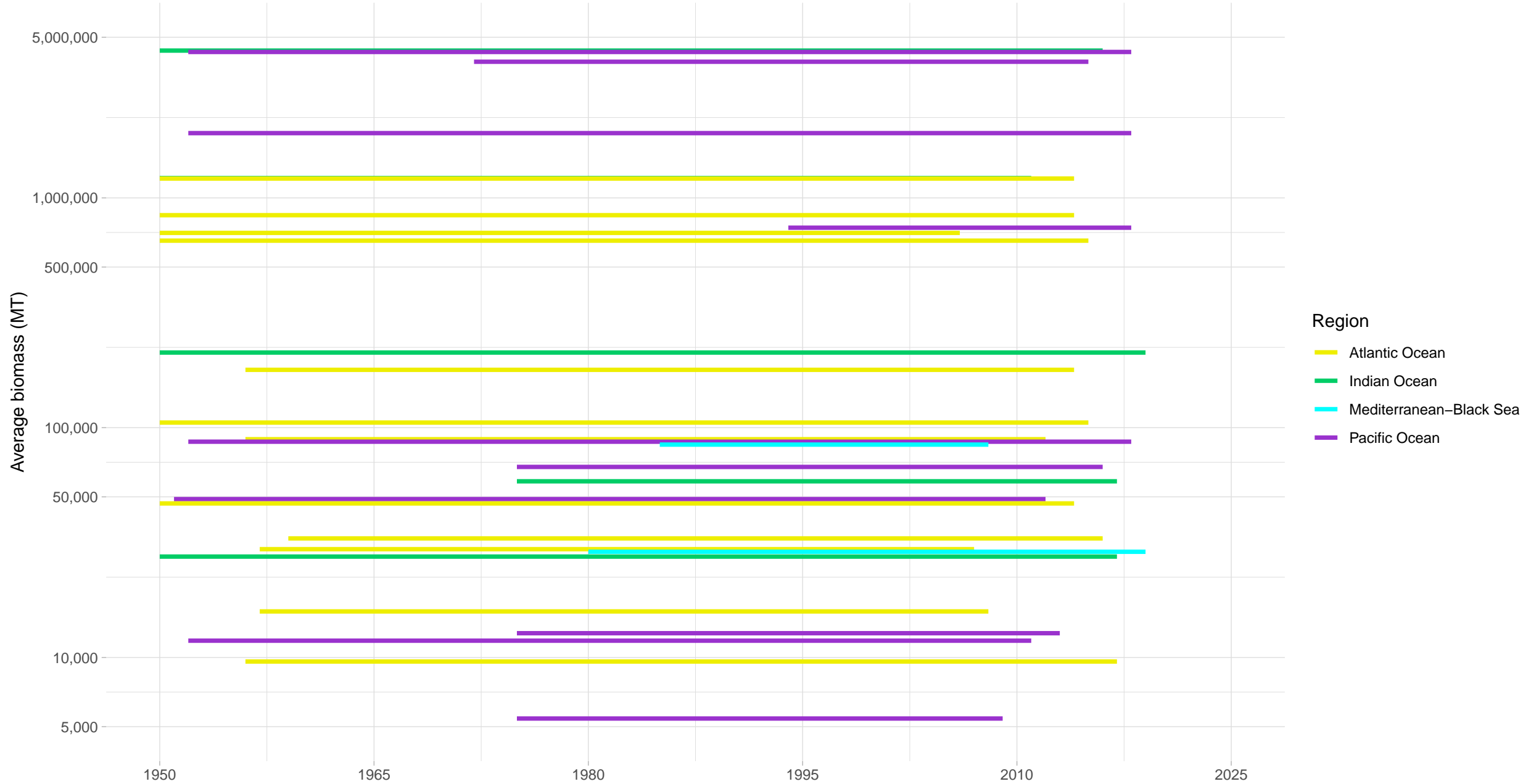
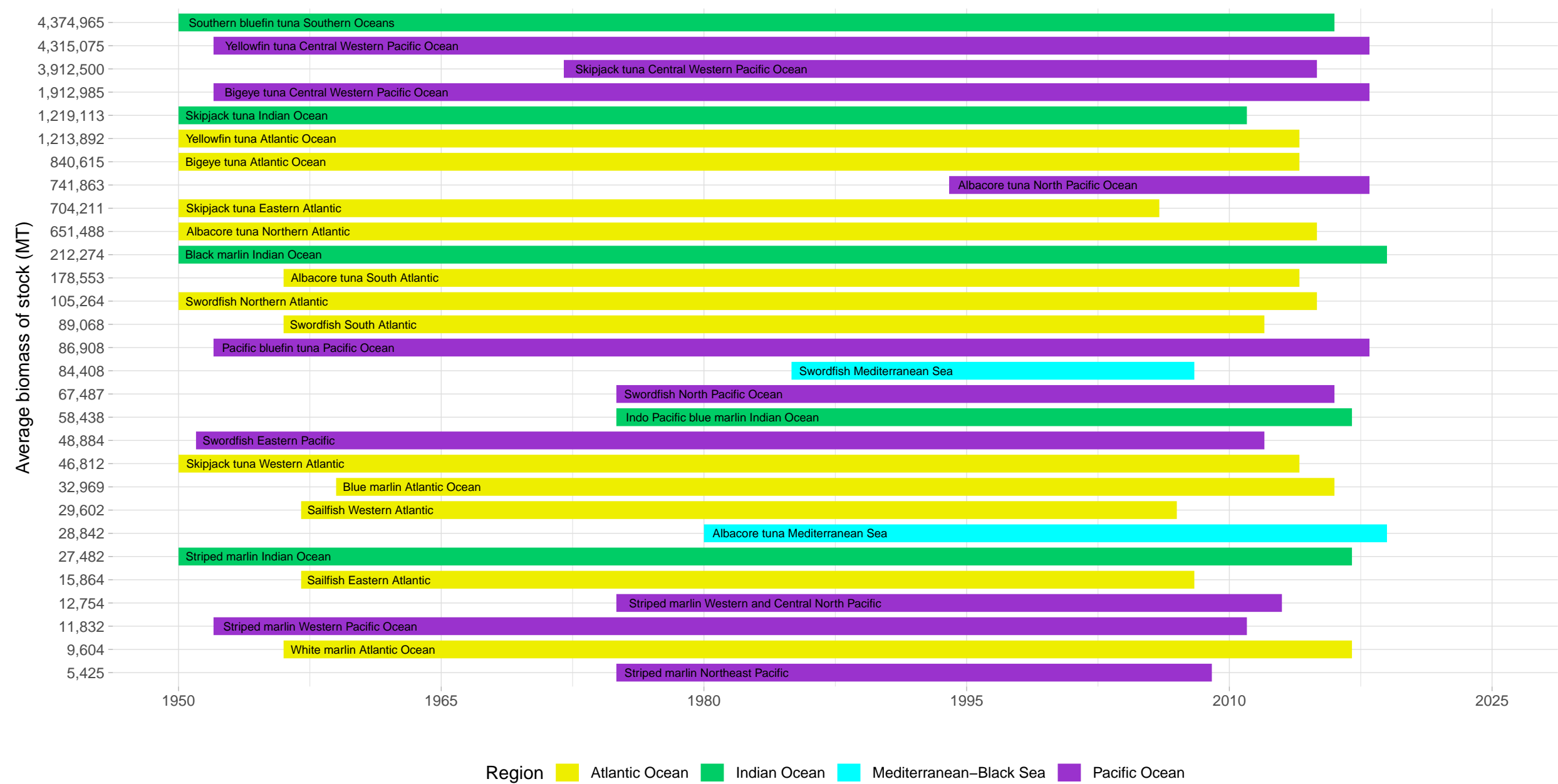


Biomass Coverage in Tuna–Billfish Taxonomy Group



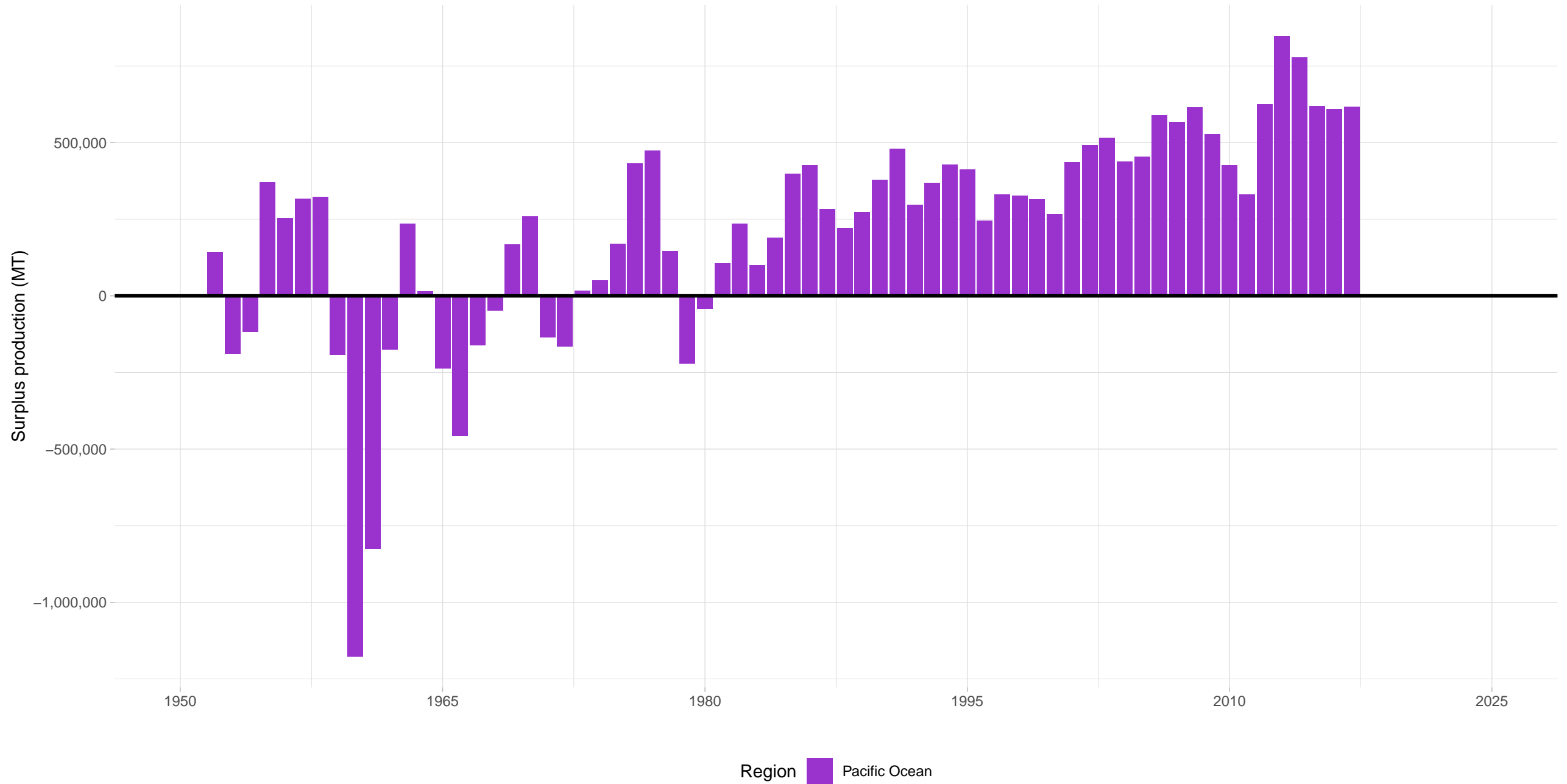
Biomass Coverage Over Time in Tuna–Billfish Taxonomy Group

Stocks ordered from lowest to highest average biomass



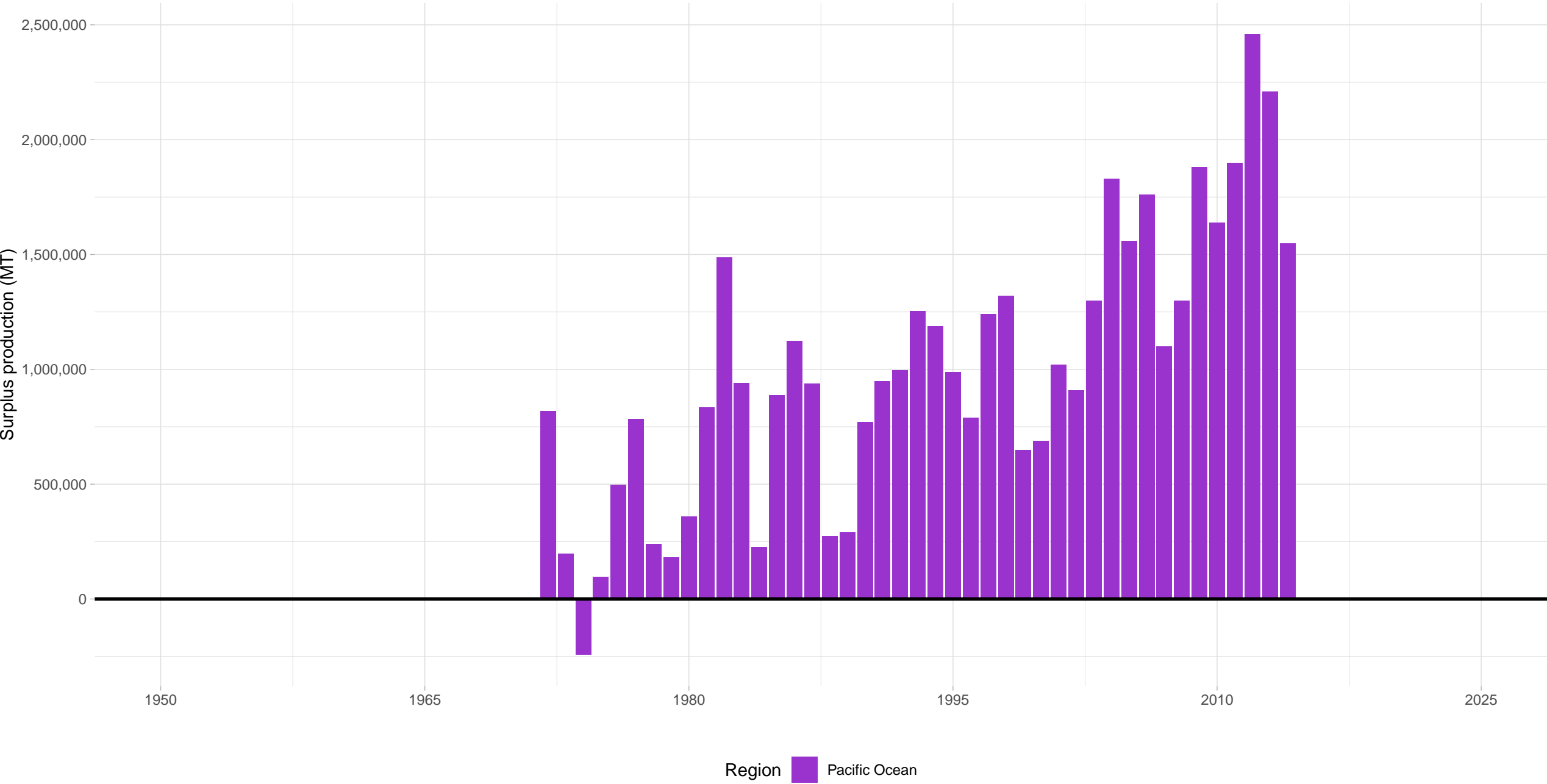
# Yellowfin tuna Central Western Pacific Ocean – Tuna–Billfish Taxonomy Group

Stock represents 16% of average absolute surplus production



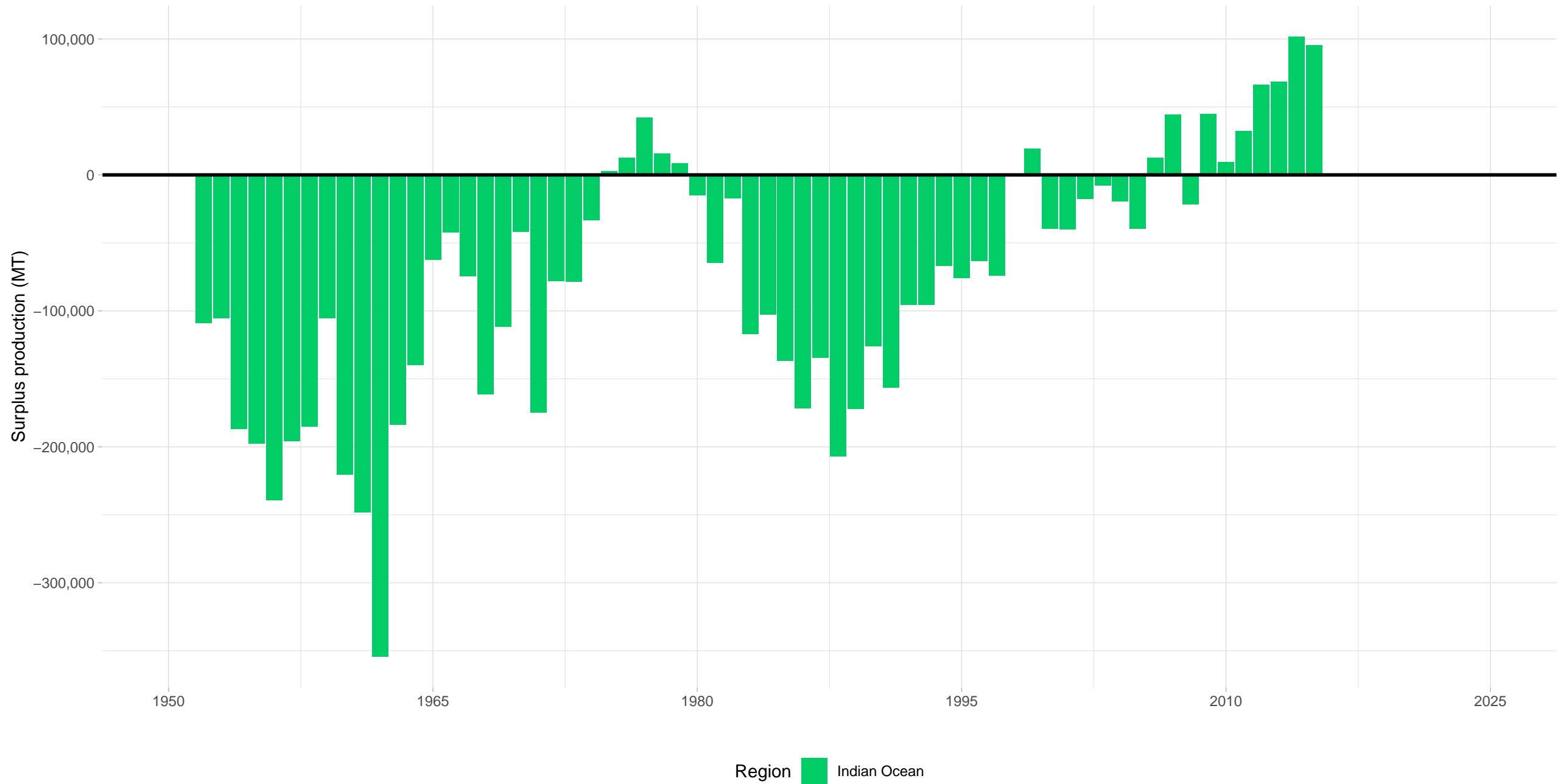
Skipjack tuna Central Western Pacific Ocean – Tuna–Billfish Taxonomy Group

Stock represents 47% of average absolute surplus production



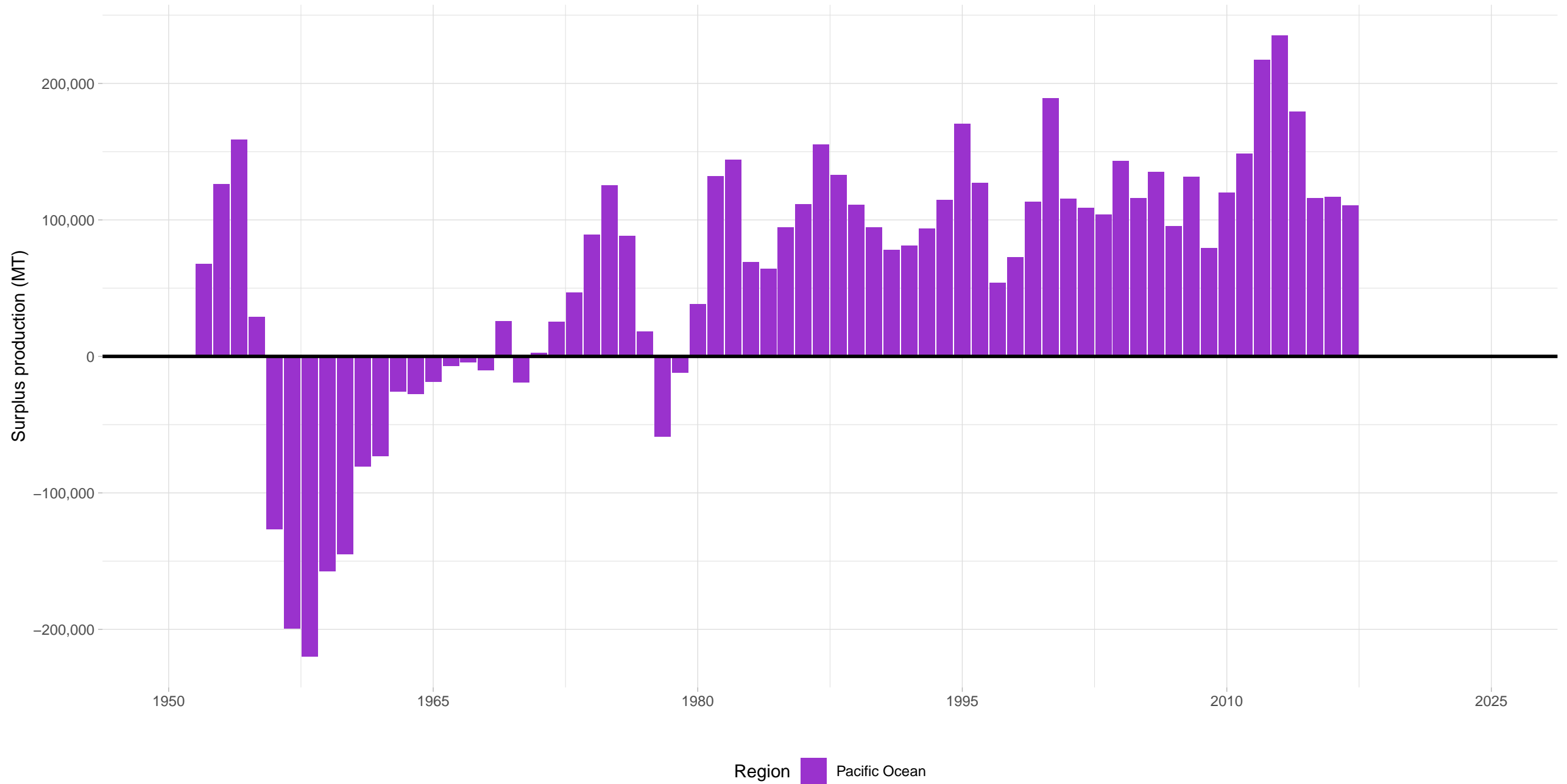
# Southern bluefin tuna Southern Oceans – Tuna–Billfish Taxonomy Group

Stock represents 4% of average absolute surplus production

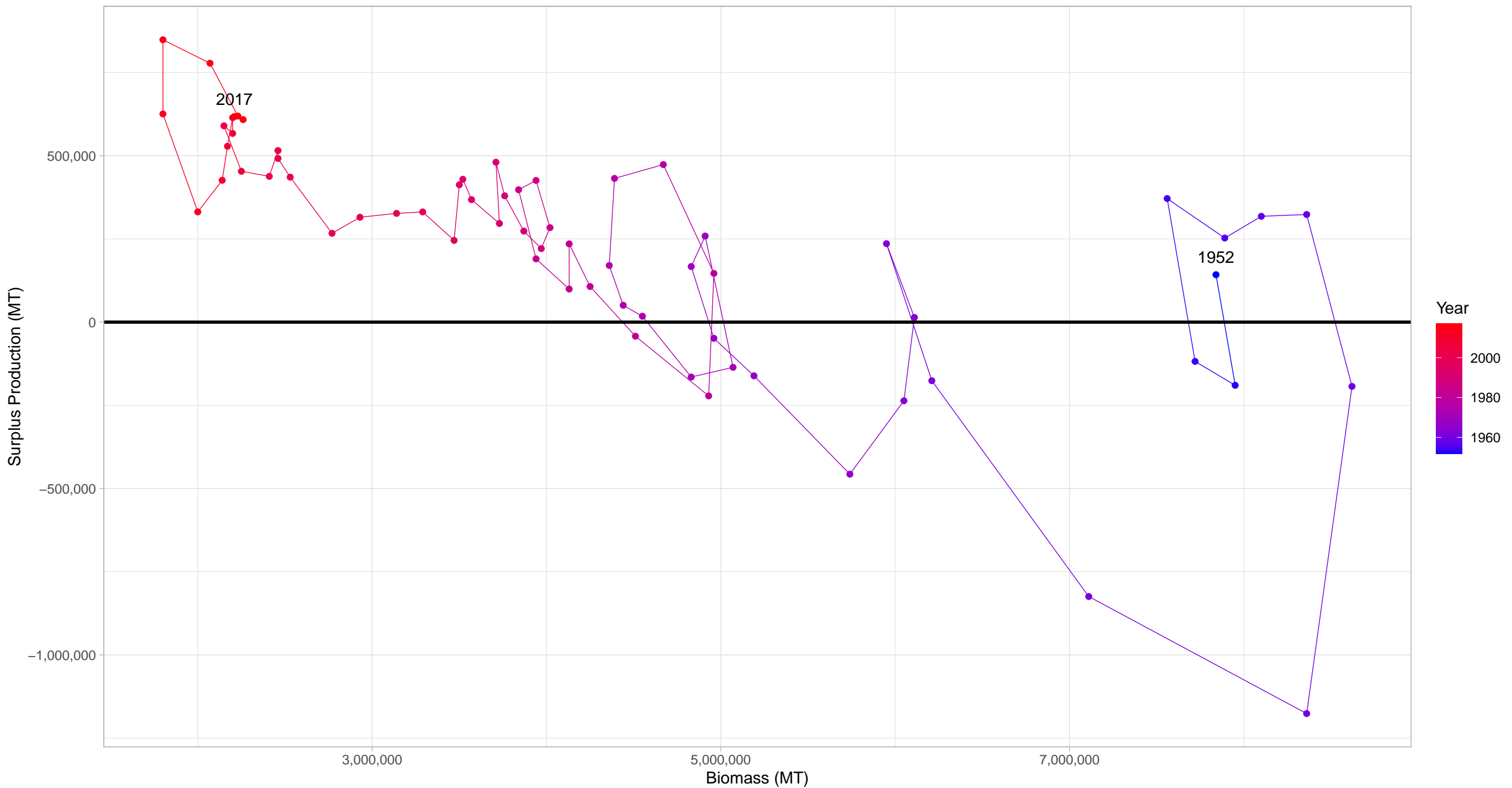


# Bigeye tuna Central Western Pacific Ocean – Tuna–Billfish Taxonomy Group

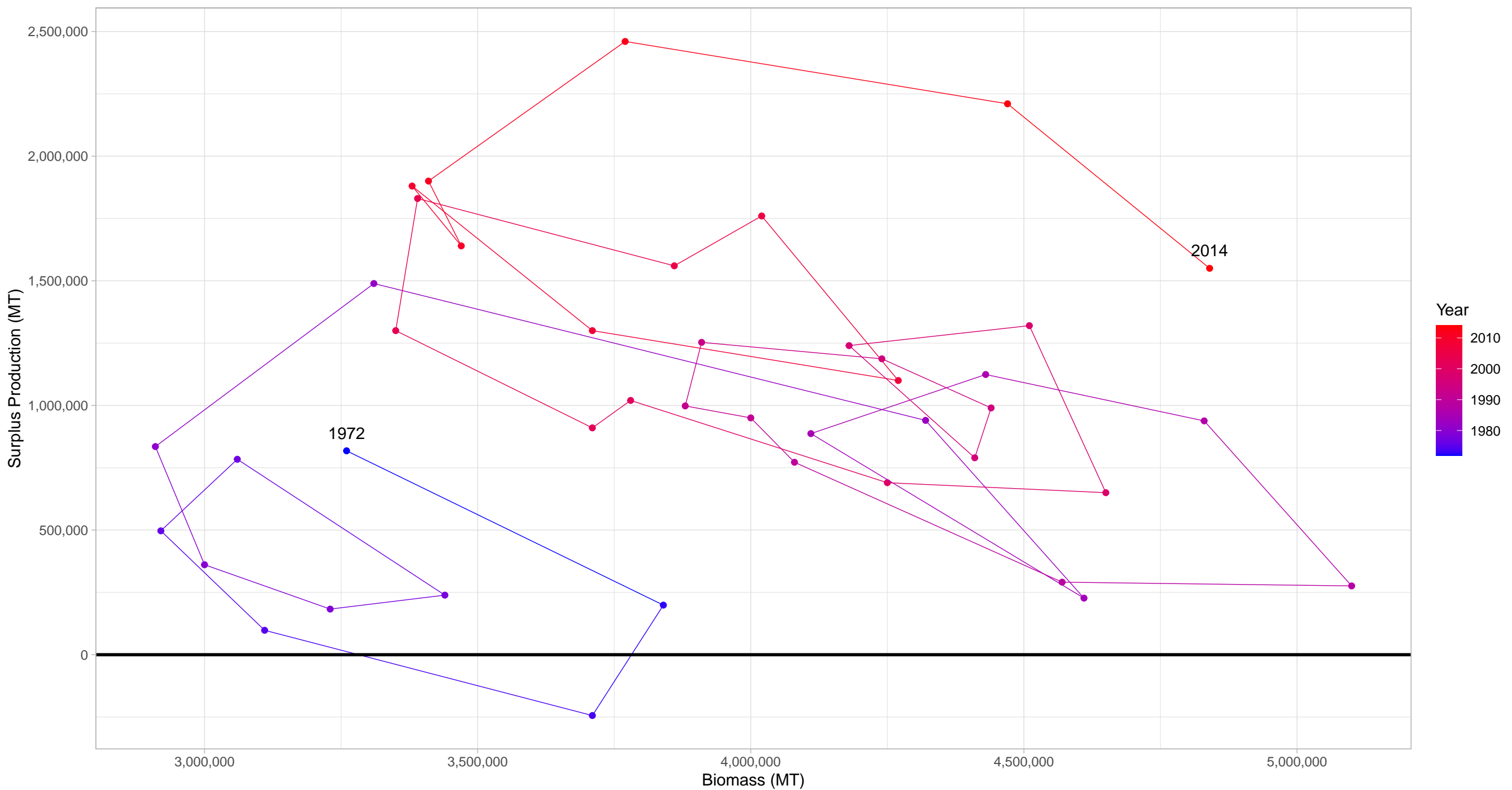
Stock represents 5% of average absolute surplus production



# Yellowfin tuna Central Western Pacific Ocean in Tuna–Billfish Taxonomy Group



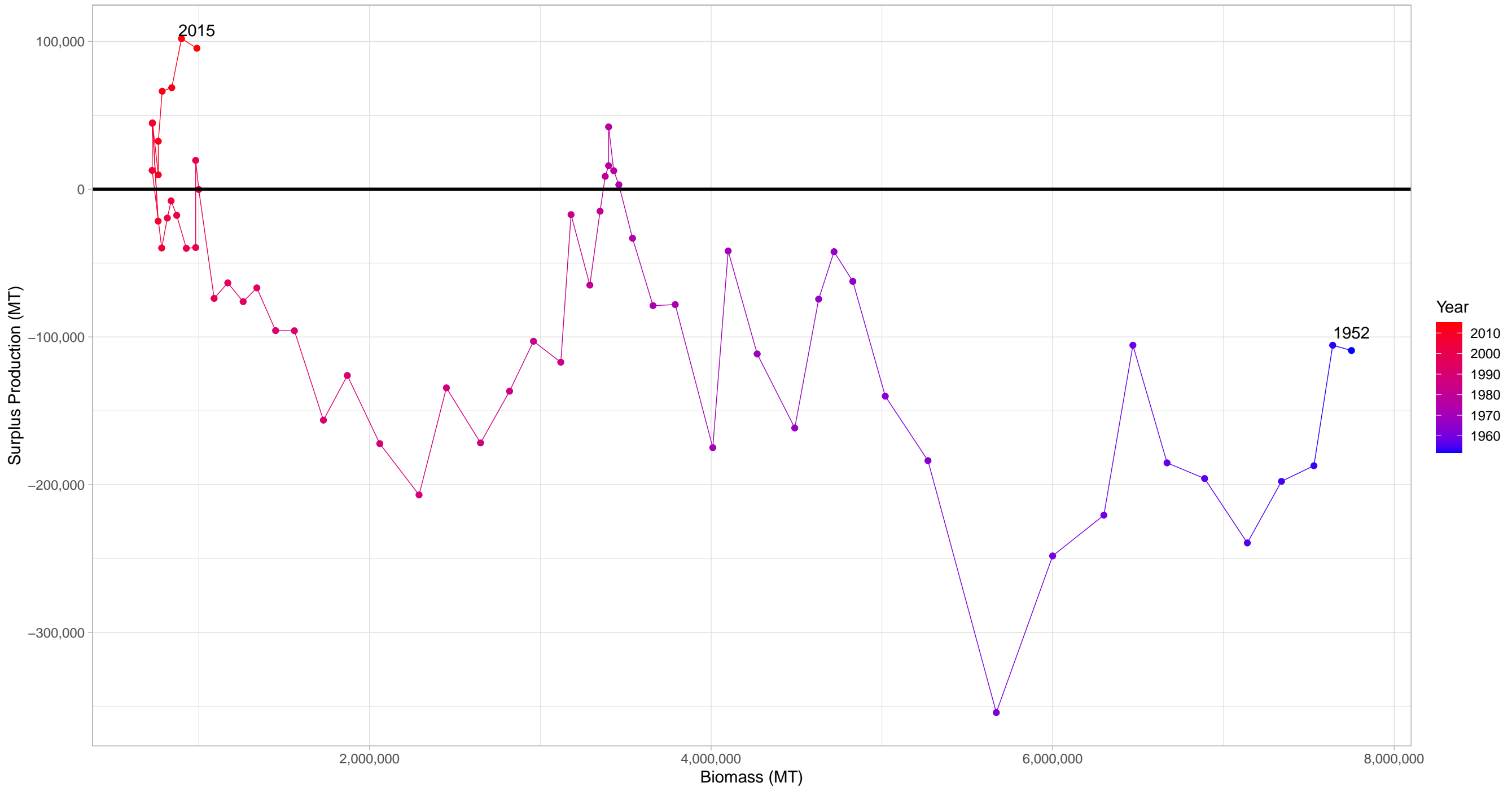
# Skipjack tuna Central Western Pacific Ocean in Tuna-Billfish Taxonomy Group



First and last years with recorded surplus production are labeled



# Southern bluefin tuna Southern Oceans in Tuna–Billfish Taxonomy Group



First and last years with recorded surplus production are labeled

# Bigeye tuna Central Western Pacific Ocean in Tuna–Billfish Taxonomy Group

